

VENDOR: DINA CONSULTING  
 612 ST SOUTH  
 NAMPA IDAHO 83651

PN: LCD-1202331  
 UOM: EA

DESIGNED TO EXCEED EMC REQUIREMENTS IEC 60571

2 YEAR WARRANTY

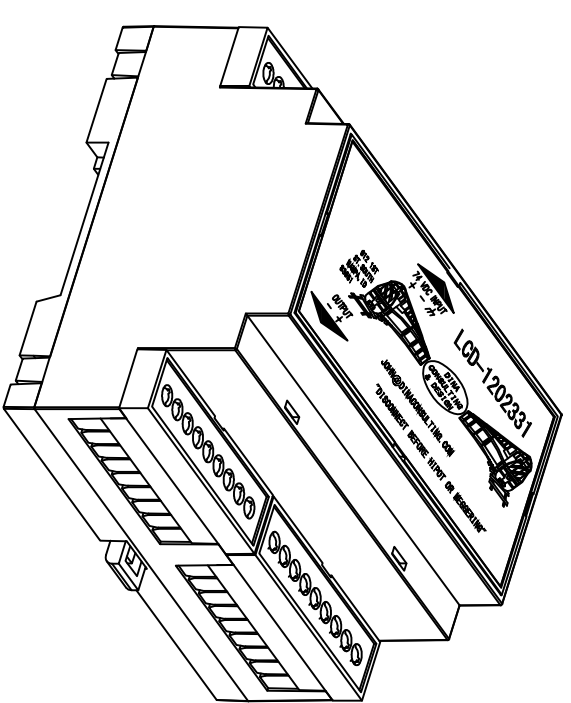
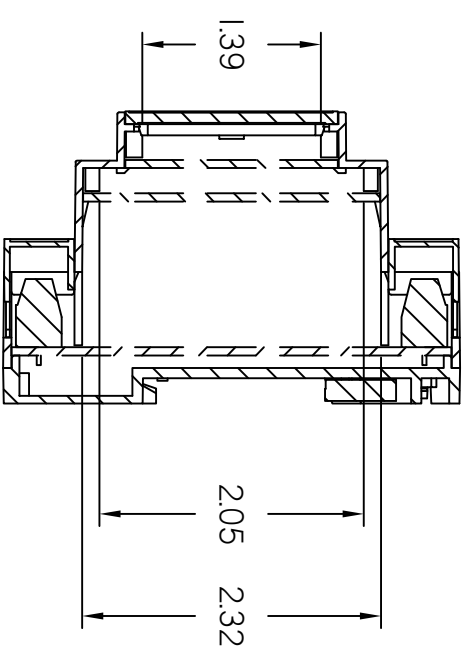
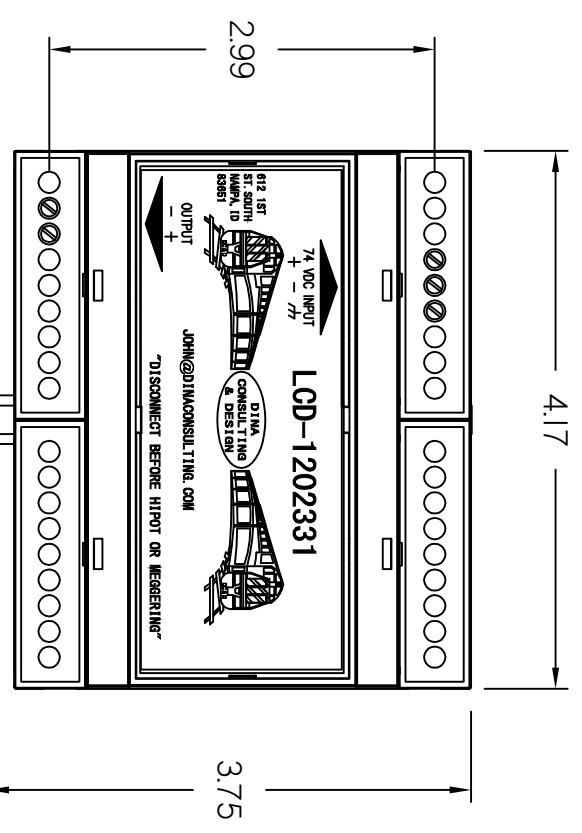
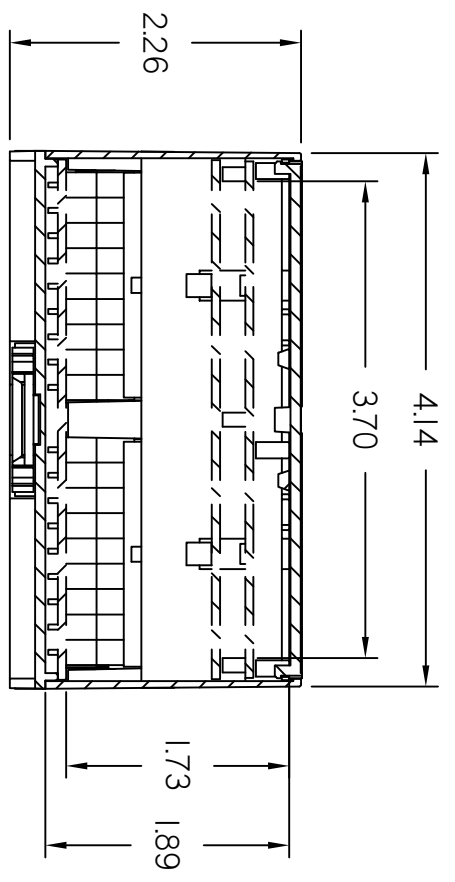
SALES REP: John Dina

EMAIL: [JOHN@DINACONSULTING.COM](mailto:JOHN@DINACONSULTING.COM)

**INPUT Power**  
 Voltage range: 36 VDC - 90 VDC  
 Current: 185 W @ 74 VDC

**OUTPUT POWER**  
 Voltage Output: 63 VDC  
 Current: 1.5 AMP @ 63 VDC  
 Efficiency: 88%

**Environmental**  
 Operational Temp: -30 C to +85 C  
 Storage Temp: -40 C to +100 C



REV	DESCRIPTION	DATE	REVISION HISTORY
-	INITIAL RELEASE		
			REVISOR: J MANGEAC CHECKED BY: DCD RELEASED BY: J DINA
		07/10/13	

APPROVALS	
DRAWN: JOMANGEAC	07/07/13
CHECKED: DCD	07/07/13
ENGINEER: JDINA	07/07/13
FIRST USED	-

**DC & D**  
 DINA CONSULTING & DESIGN  
 612 1ST SOUTH  
 NAMPA IDAHO  
 83651

DESCRIPTION  
**POWER BOOST SUPPLY**  
 74 / 63 VDC 1.5 A

UNLESS OTHERWISE SPECIFIED, DIMENSIONS ARE IN INCHES. TOLERANCES ARE: DECIMALS: X = ±.2 XX = ±.06 XXX = ±.010 ANGLES: X = ±1° XX = ±0.5° DO NOT SCALE DRAWING	MODEL FILE	DWG SIZE	SCALE: 1:1.5
THIRD ANGLE PROJECTION	DRAFT FILE	DRAWING NUMBER	WEIGHT: 1.16LBS
	LAST SAVED	<b>LCD-1202331</b>	SHEET 01 OF 01